


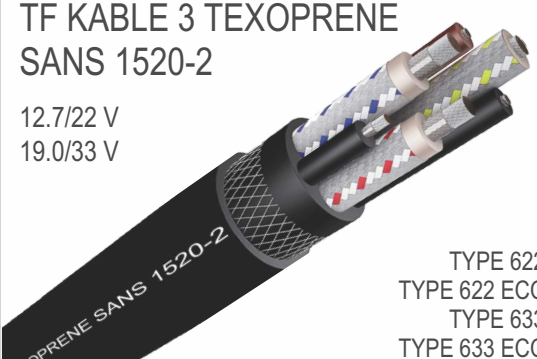
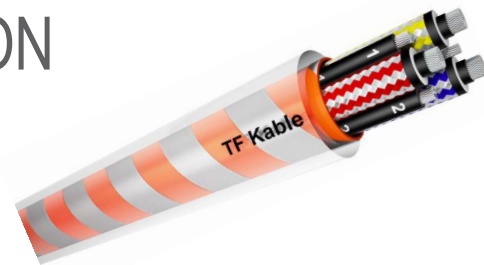


SPECIALISED MINING CABLES

| | |
|--|---|
| <p>TF KABLE 3 TEXOPRENE SCOOP 640/1100 V</p>  <p>TRM TRMC TRSS SCOOP</p> | <p>TF KABLE 3 TEXOPRENE SANS 1520-1 640/1100 V 1900/3300 V</p>  <p>TYPE 41 TYPE 61 TYPE 63</p> |
| <p>TF KABLE 3 TEXOPRENE SANS 1520-2 3.8/6.6 V 6.35/11 V</p>  <p>TYPE 66 TYPE 66 ECC TYPE 611 TYPE 611 ECC</p> | <p>TF KABLE 3 TEXOPRENE SANS 1520-2 12.7/22 V 19.0/33 V</p>  <p>TYPE 622 TYPE 622 ECC TYPE 633 TYPE 633 ECC</p> |

OUR LATEST INNOVATION

Flexible, reflective or neon TPU sheathed screened mining cables. High abrasion and tensile pull properties.



Manufacturer of flameproof and explosion proof products

Proof Engineering specialises in the design and manufacture of innovative flameproof, explosion proof and non-flameproof plugs, sockets, adaptors and cable couplers for the mining and tunneling industries. The range includes 0.6 kV through to 35kV, 120A through 800A couplers in a variation of configurations i.e. plugs, sockets, adaptors, as well as a PLM aluminium range that meets international specifications for hazardous and non-hazardous areas.

In addition, we are able to offer our customers:

- ✓ Fitment of the connectors to the cable when purchased as a complete set
- ✓ Comprehensive design capabilities (inclusive of unique or special designs to suit specific applications)
- ✓ Fully equipped in-house foundry and machining capacity
- ✓ State-of-the-art machining CNC machining

PROOF MINING SOLUTIONS

PROOF ENGINEERING
A division of Hudaco
JHB (HO): 011 824 1146
Fax: 011 824 1237
Email: sales@proofholdings.co.za
Web: www.proofeng.co.za

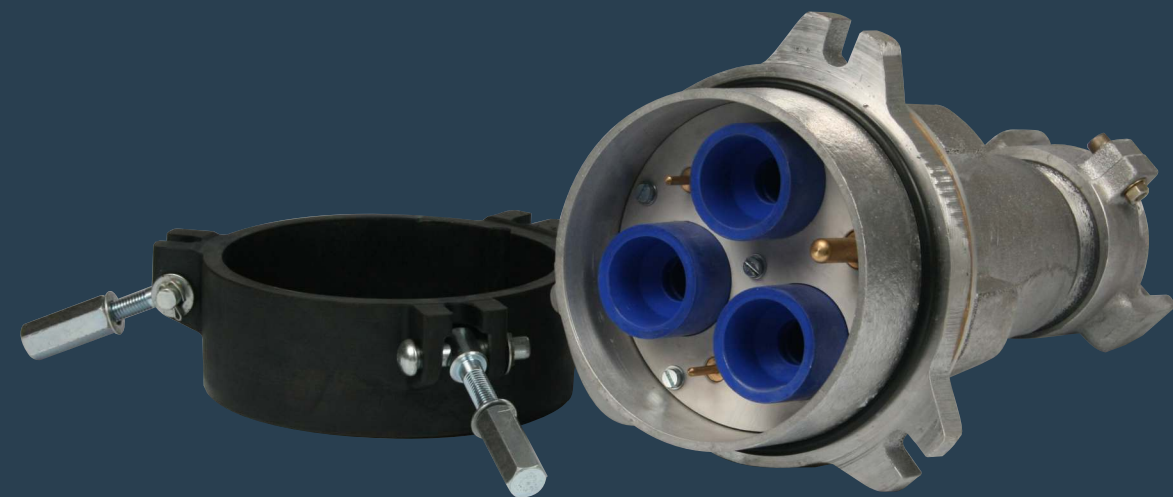
MANUFACTURING FACILITY
No 368 Sifon Street
Robertville, Roodepoort, 1709



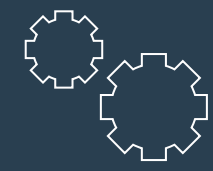
PROOF MINING SOLUTIONS



366 200A 6.6kV Plugs & Sockets

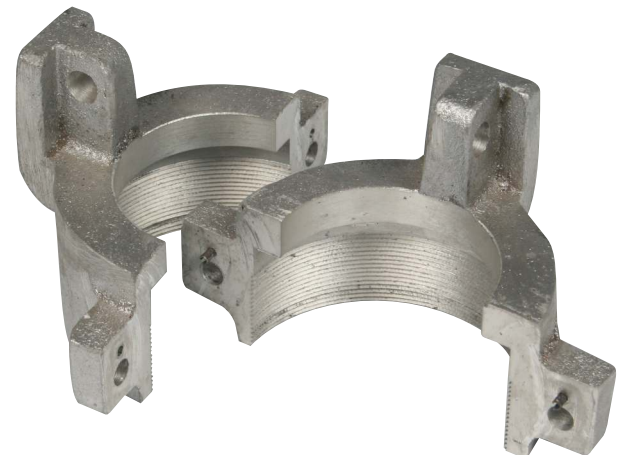


366 200A 6.6kV 200A PLUGS & SOCKETS



Technical Data

- ✓ Contacts are sweated, no grubscrew or crimp type connectors
- ✓ Contacts drilled to suite cable requirements
- ✓ Contact pins: 3-Phase connection & one earth. Up to 3 pilots (optional)
- ✓ Insulator: Silicone
- ✓ IP54 rated & corrosion resistant
- ✓ Maximum cable diameter 76mm or 95mm²
- ✓ Maximum conductor size: 14mm
- ✓ New quick-release
- ✓ Plug & socket rated at 6.6kV 200A
- ✓ Quick-thread double start coupling & slow-thread system (available on request)



Electrical Characteristics

- ✓ Dry lightning impulse 27kV (Test report: HV/100289B)
- ✓ Phase-to-phase 15kV
- ✓ Phase-to-earth 8.6kV



Features and Benefits

- Flexible silicone insulators that can be individually replaced (Hard type insulators on request)
- Lightweight aluminium design
- Maximum cable OD: 95sqmm
- Grommets cut to suite cable OD
- Quick-release mechanism (easy coupling)
- Stainless steel pilots: Prevent bending during coupling
- 6000 Volt 200A rated

Applications

- Primarily used in opencast applications
- Power supply to rock drills & shovels
- Used with flexible mining cable (similar to Texoprene TRM cable)

After Sales Service Solutions

- Coupler repair services (on request)
- Spares locally manufactured (ex-stock)
- Technical back-up and support 24/7
- Termination of the cable into the coupler (available on request)
- Training on terminating the coupler (available on request)